



January 2012

Milton Township CERT Newsletter

Dual Member Profile—

In the beginning there was no CERT Team. But at the beginning there was O. Chris Heidorn. In the Fall of 2003 he singlehandedly researched , funded, and sponsored the first Milton Township Cert Team program in Milton Township.



And today after eight years of hard work and 632 graduates he continues to lead and guide our team as its chairman, elected representative, and authenticator for every Cert certification issued. That's all you would expect him as chairman to participate in, right? Well think again.

For virtually all but a few Cert Classes Chris Heidorn has taught our first Introduction class each and every time. His love of the team, township government, and our community comes together in that class, making what could be a routine lecture palatable. Beside his daily availability and guidance for me as director, Chris additionally demonstrates his skills for the team.

Here you see Chris at the 2011 Henry Class graduation applying his moulage skills to our Boy Scout victims.



Then there is Chris Heidorn the leader acting as both I. C. leader and observer/debrief facilitator in our very first CERT Class Alpha 2004.



Chris Heidorn's commitment to supporting the team whatever future grant monies may or may not bring provides us with the financial stability to plan future events and trainings that other teams only dream about. With his continued presence I feel confident Cert will be in every township in DuPage County someday thus surrounding our community with volunteers in any disaster. To that end this place we call Milton Township owes Chris our gratitude and support. I know that's why I will continue to serve under him and ask you all to do the same. Have a safe CERT year. Ralph G. Hinkle, executive director

Inside this Issue:

Member Profile- O. Chris Heidorn	1
Tools of the Trade	2
Toys for Tots	3
CPR	3
Metra Rail Seminar	4
Shop with the Sheriff	5
Van Trailer Tent Help	6

Upcoming event

- Jack class starts Jan. 26th

To Signup for events email

MiltonCERTsignup@aol.com

Tools of the Trade

By: Paul Mueller, Jr.

The number one rule for CERT members is to never put yourself in a dangerous situation. Member safety is essential to helping as many people as possible. To that end, it is important that team members utilize personal safety equipment whenever they are in the field.

Personal safety equipment fits into two broad categories: first, general equipment and second, personalized equipment.

The first category, general safety equipment, includes leather gloves, sturdy work boots, safety glasses, hard hat, reflective safety vest, an N95 face mask and in some instances, hearing protection.

Let's talk a few moments about each of these items. Leather gloves are recommended because of their durability and the level of protection they afford above the standard utility or gardening-type gloves. The leather gloves will last longer and perform better than the lighter gloves. Just make sure that the gloves fit properly and are broken in. It is also important to keep a few pairs of non-latex gloves in your pack, as well.



Breaking in your work boots is critical. Use the boots around the house when you are doing projects or cutting the grass. Nothing beats a pair of broken in boots and nothing is worse than a new pair for general discomfort. Steel toe or steel shanked boots offer an additional level of protection.

Safety glasses are a must have item. Again, make sure that the glasses fit properly and are comfortable for extended wear. If you wish to upgrade from the standard issue, look for OSHA/ANSI safety ratings. Having one clear pair and another tinted (sunglasses) may prove helpful, especially on sunny days. Don't fall into the trap of using your regular glasses or sunglasses unless they are made specifically for use as safety glasses.



The CERT issued hard hat is a good quality helmet that met all of the safety requirements at the time it was issued. Upgrades however can include reflective tape on the sides and back to aid in low light recognition by other team members. Some folks like to add their name, as well. Another upgrade to consider is a helmet liner for those cold call outs. These liners are quite inexpensive and can be found easily at big box hardware stores.

Face masks should carry the N95 designation; without it you are not being fully protected. A pair of ear plugs tucked in the pack can prove helpful if the deployment finds you working near a loud motor, such as a generator or with loud equipment, such as a chainsaw. Comfort is key here; if they are uncomfortable, you won't use them.

Finally is the person specific safety equipment; this would be items that meet your specific needs. Perhaps you have bad knees and wish to wear knee pads to protect them. Or maybe it is your elbows or shoulders that need protection from bumps. Prescription glasses or sunglasses with safety glass are another example.



Sometimes safety equipment is overlooked or deemed unnecessary and uncomfortable to use. I've seen folks make fun of those wearing eye protection, for example, only to have saw dust or dirt whip up and get in an eye. Think of safety equipment as insurance. You may never need it, but if you do, it was the best money you ever spent.

CERT helps out Milton Township Food Pantry

By: O. Chris Heidorn

CERT Executive Director Ralph Hinkle and CERT Leader Dave Garber gave up their time to help the needy. As a part of the holiday preparations for the Milton Township Food Pantry, Ralph & Dave off-loaded all the CERT equipment and paraphernalia from the van and trailer to make room for Santa. They took the van and trailer and filled them to the top with *Toys for Tots*, courtesy of the U.S. Marine Corps Reserve. They delivered the 575 new toys to the Milton Township Food Pantry for distribution to the needy. Milton Township Caseworkers Jackie Jones and Ronna Johnson (also a CERT member) together with other volunteers organized the toys by age and gender and arranged for volunteers (including some great Boy Scouts) to oversee the orderly distribution of the gifts to the needy families that use the Food Pantry.

The Milton Township Food Pantry is not supported by tax dollars and operates strictly on donations of cash or food and sundries as an IRC 501(c)(3) tax deductible charitable organization. The caseworkers administer the program, using volunteers to qualify, sign in and “shop” for the low-income applicants. Volunteers are always needed and very much appreciated. If you find that you have the time, let us know and we will be happy to put you to good use (besides, it’s fun helping out).



CPR Class

By: Naresh (Squared) Nair

It was a cold day on January 14, 2012. But that did not stop several members on our team that needed to get certified for CPR/AED. Our Restart CPR partnership with Tiffani Clausen and Dan Czwoznog is growing strong as they are great instructors and a great asset to the team. The class was so popular we had to turn people away. Our Milton C.E.R.T. team is already in the process of rescheduling more classes to accommodate everyone. The CPR/AED training is a great way to continue on with your extra training to be prepared. Congratulations to our new 14 trained graduates and keep up the good work.





Metra Rail Seminar

By: David Gaber

- Get Union Pacific permission: Check
- Acquire auditorium for seminar: Check
- Make final calls to all First Responders: Check
- Call weather man and get permission for perfect conditions: Check

That is what it is all about folks, hitting on all cylinders and being part of a great thing. I've been a part of this organization for a very short 2 years, and I must say this event we all took part in, was the "Big Kahuna."

From the very start, meeting with Ralph Hinkle, getting permissions, making a lot of calls, setting a schedule, we as a team made this event what it was, an event to be remembered for quite a while ,I know I will.

The day started out as I mentioned above "perfect" 56 degrees, light wind, sunny and everyone with a great attitude for learning a new aspect of First Responders rescue technics on a railroad accident.

We had 4 participating agencies in the event, West Chicago, Warrenville, Winfield, and Wheaton. A total of 10 responders were staged at 5 of the six events that were in place ,we started with Incident command ,Size up, Triage, Collar and Boarding, Medical treatment area and our own Bob Macht on Transport area.

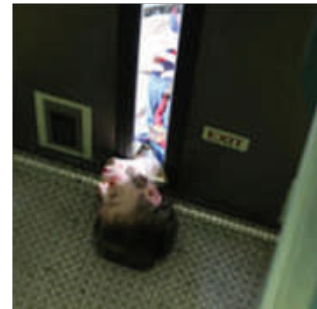
Each staged area had a time of approx. 15 for a timeline for a hint of what goes on at an incident.

Let me back up a minute and explain "Who" was also at this event .The field of participants was made up of Milton Township Cert members from past and pending classes , outside Cert teams , Chicago, New Lenox, West Chicago, Hanover Township, we made a group of 97 people.

Alongside the efforts of Union pacific employees, Metra seminar leader Tom Donegan, P.A.C.E Bus co. leader Ken Grish manning 4 buses for the events participants' transportation to and from the site event West Chicago's UP Provo's railroad training center in town. Not to mention the Wheaton Boy Scouts 22 volunteer accident victims, and my daughter Lynette.

This newsletter commentary could be a mile long with a ton descriptions of each item and stations but with a shortage of paper in the world, I am only going to remind all of us participated in this year's premiere event pass on your experience to future CERT members, remember to thank a First Responder when you get the chance, and keep the up the great turn out at these events, it shows great character in the teams we support.

A thank you from myself to my team for which this would not even have been even an idea, I owe you all a tremendous amount.



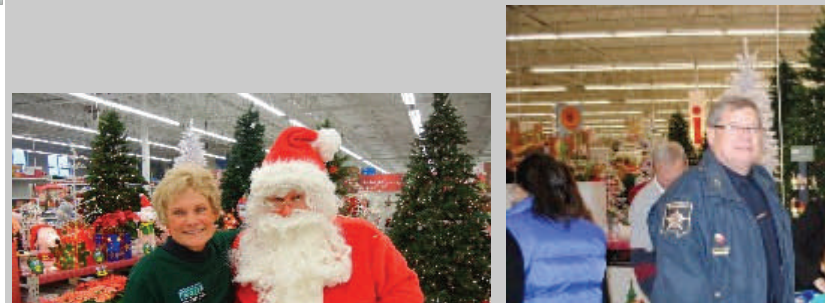
Shop with the Sheriff 2011

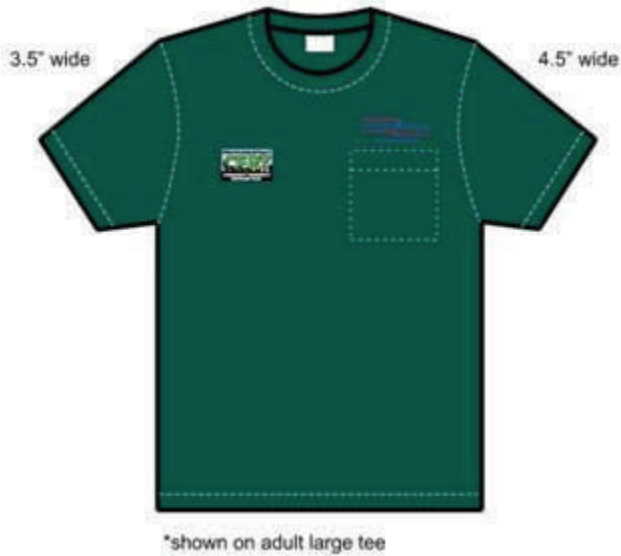
By: Ralph Hinkle

Each year law enforcement departments from throughout DuPage County treat about 100 under privileged kids from local communities to a wild Christmas shopping spree for themselves and their entire family. The patrolman's association donates all the funding, Meijer Stores provides the location, and volunteers from our own Milton Township CERT team wrap the gifts each child has selected. In addition the kids are picked up in a squad car caravan with full lights and sirens, fed breakfast first, and driven home thereafter with a squad car full of wrapped gifts. Wow what an honor to be a part of. Here are a few shots from this years event.



Each year law enforcement departments from throughout DuPage County treat about 100 under privileged kids from local communities to a wild Christmas shopping spree for themselves and their entire family. The patrolman's association donates all the funding, Meijer Stores provides the location, and volunteers from our own Milton Township CERT team wrap the gifts each child has selected. In addition the kids are picked up in a squad car caravan with full lights and sirens, fed breakfast first, and driven home thereafter with a squad car full of wrapped gifts. Wow what an honor to be a part of. Here are a few shots from this years event.





Official CERT Tee Shirt™ Milton Township Cert Team

A beautiful 100% 5.6 oz Cotton

Shirt with pocket from



FRUIT OF THE LOOM®

- This Forest Green Shirt comes in sizes Medium to XXX Large
- It features an embroidered (not Screened) CERT LOGO on front
- and a retro reflective night time safety "CERT "name on the back

Your Cost is \$18.00 and available on line only @ miltoncertsignup@aol.com

Please include your name/ size/ quantity/phone/ & return e-mail address with order

Not available to anyone but Certified Milton Township Cert Graduates



Hey The VAN, TRAILER, & TENT TEAM Are Looking For Help!

If you're a good driver, would like to participate more with CERT, and plan on attending some training and events anyway; then consider joining our equipment logistics team.

"Nothing is stronger than the heart of a volunteer"

Col. James Doolittle, USAAF



Please contact Dave Garber (Zulu) dvdgrbr3@comcast.net



SSI SAFETY Services
INCORPORATED



SAFETY | HEALTH | ENVIRONMENTAL | HOMELAND SECURITY

- First Responder – First Receiver – CERT | SERT
- Personal Protective Equipment since 1948
- Women's Business Enterprise – nationally certified
- Visit our website to order online www.safetyservicesinc.com/certs

Your Milton Township Source for CERT Supplies.

Special Pricing on all CERT Related products
for Milton Township CERT Team Members.
Make sure to mention this ad when inquiring on product.



800.632.2955 | www.safetyservicesinc.com



1492 N. Main St
Wheaton, IL 60187

Phone: 630-668-1616
Fax: 630-668-1608
Email: MiltonCorps2@aol.com

“Are You Ready?”

We are on the web:
<http://www.milontownship.net>

Visit the calendar for current and future classes/events

<http://calendar.yahoo.com/miltoncorps2>

Visit the gallery of photos from past classes/events

<http://www.mtcert.com>

